

Company Profile

BACKGROUND

Katahira & Engineers International (KEI) is the former Overseas Projects Department of Katahira & Engineers, Inc. (KE), one of the firms comprising the KATAHIRA GROUP which was founded in 1970 as an independent firm of civil engineering consultants based in Tokyo, Japan. The department, which was established to handle the firm's projects in Southeast Asia, became Katahira & Engineers International (KEI), a separate and independent company, in 1987. **KEI** is the strategic think tank and international arm of the Katahira Group, responsible for projects outside of Japan. While Katahira & Engineers, Inc. is the arm which handles the Group's firm highly specialize technology in transport sector in Japan market. This relationship is shown in the diagram in **Figure 1-1**.



Figure 1-1 THE KATAHIRA GROUP

Staffed with a team of highly qualified and widely experienced professionals skilled in all disciplines necessary for efficient planning, design, and construction of transport infrastructures, and safeguard specialis, **KEI** has successfully completed a large number of projects throughout Asia, Africa, and Central America.

Having earned a sound international reputation in its pursuit for professionalism and excellence in its performance and accomplishments, **KEI** has gained the trust of its clients and established excellent relationships with international institutions, foreign governments, and international funding organizations such as Asian Development Bank (ADB), Japan International Cooperation Agency (JICA), International Bank for Reconstruction and Development (IBRD), and International Development Association (IDA).

KEI has carried out projects through the Official Development Assistance (ODA) of the Government of Japan and has undertaken numerous grant aids and technical cooperation projects

ORGANIZATION STRUCTURE

1. Name of Consultant in Full : **KATAHIRA & ENGINEERS INTERNATIONAL**
2. Officers :
 - President : Tomohiko Nakamura
 - Senior Vice President : Akira Iwashita
 - Executive Director : Katsuya Ishikawa
 - Executive Director : Tsuyoshi Yamajuku
 - Executive Director : Mikio Yamazaki
3. Offices and Contact Details
 - Tokyo Head Office : 1-14-1, Shintomi Chuo-ku
Tokyo 104-0041, Japan
Tel. No. + 813-62803500; Fax No. + 813-62803501/02
E-mail: kei-tokyo@katahira.com
 - Manila Office, Philippines : 21st Fl. Unit 2103, The Podium West Tower,
12 ADB Avenue, Ortigas Center, Mandaluyong City,
Philippines
Tel. No. +63-2-86341623 / 24; Fax No. +63-2-86348446
E-mail: katahira@kei-mnl.com
 - Jakarta Office, Indonesia : Sudirman Plaza-Plaza Marein, Lt. 23 JI. Jend. Sudirman
Kav. 76-78, Jakarta Selatan 12910 Indonesia
Tel. Nos. +62-21-8065 7855
Fax No. +62-21-8065 7888
E-mail : kei.jakarta@gmail.com
 - Hanoi Office, Vietnam : 5th Floor, Locogi 13 Tower, 164 Khuat Duy Tien Street,
Thanh Xuan District, Hanoi
Tel. Nos. +84-4-3726 4060; Fax No. +84-4-3726 4050
E-mail: katahirahanoi@gmail.com
 - Colombo Office, Sri Lanka : Colombo Country Office
CBM House ¼, 2A, Lake Drive
Colombo 08, Sri Lanka

Tel. Nos. +94-71-4451593 / +94-71-2445337

E-mail: kei-sl@sltnet.lk katahira@kei-cmb.com

Dhaka Office, Bangladesh

Dhaka Branch Office

GA-37/1, Jamalpur Tower (3rd Floor, Flat-A), Block-J,
Progati Sarani, Baridhara, Dhaka 1212, Bangladesh

Tel. Nos. +88-017-4862-8826

E-mail: infokeibd@gmail.com

Besides the offices listed above, KEI also has founded offices in several countries where it has on-going works/projects. This organization structure is shown in the diagram below.

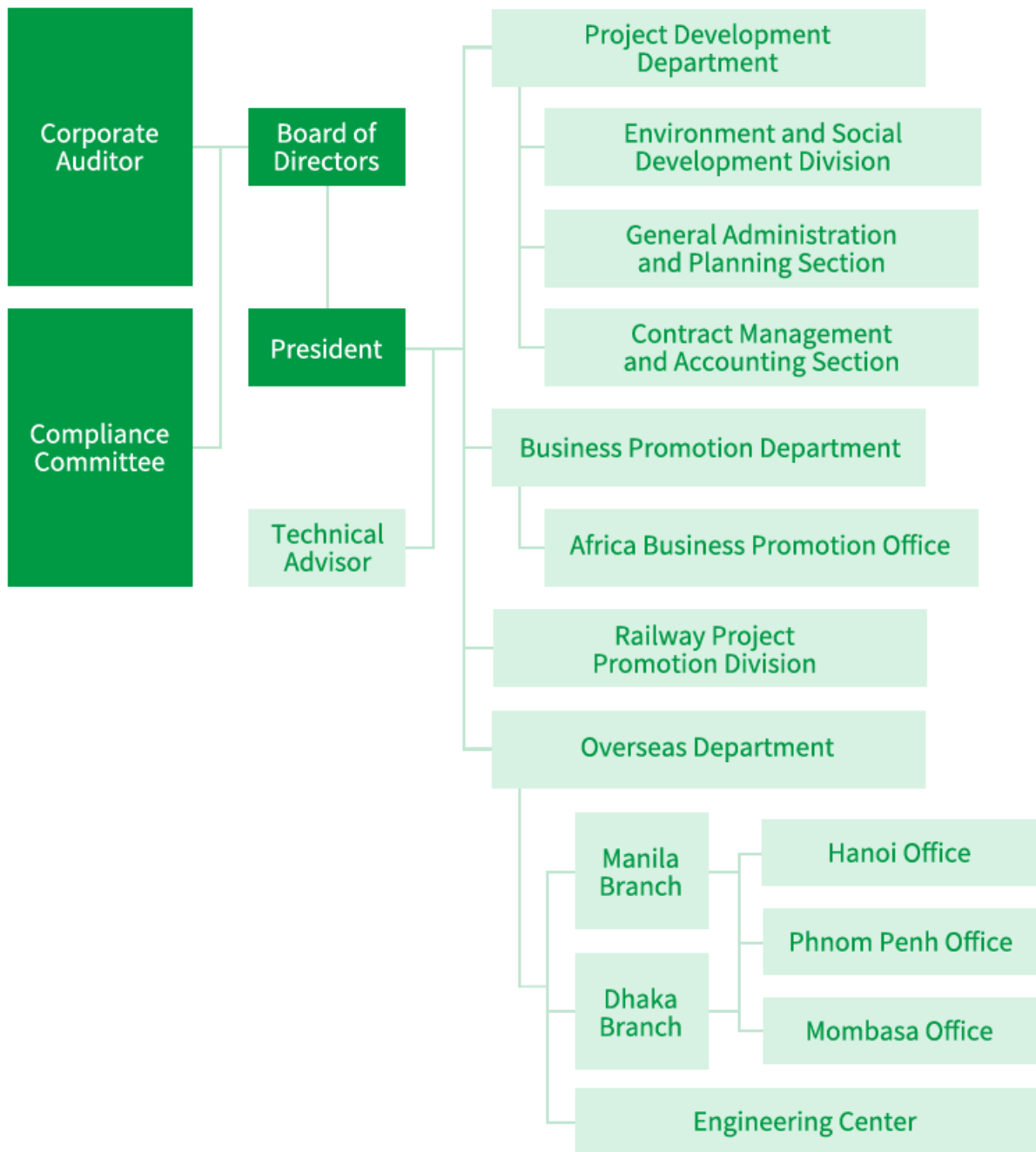


Figure 1-2 ORGANIZATIONAL STRUCTURE

AREAS OF COMPETENCE

KEI is highly specialized in providing consulting services for the following transport infrastructures:

- ⇒ Light Rail/Mass Transit and Railway Systems
- ⇒ Urban Highways, Expressways and Interchanges
- ⇒ Long-span Bridges, Viaducts and Flyovers
- ⇒ Rural Roads and Bridges
- ⇒ Tollways and Motorways
- ⇒ Tunnels

KEI's expertise likewise extends to the following areas:

- ⇒ Transportation Planning
- ⇒ Urban and Municipal Planning
- ⇒ Regional Planning
- ⇒ Traffic Safety and Management
- ⇒ Disaster Countermeasures
- ⇒ Land Reclamation
- ⇒ Water Resources Development
- ⇒ Marketing Research and Management
- ⇒ Environment and Social Safeguards
- ⇒ Community Development
- ⇒ Livelihood Improvement
- ⇒ Project Evaluation
- ⇒ Information, Communication and Technology

SCOPE OF SERVICES

KEI offers a full range of consulting services specializing in the transport sector from project conceptualization to post-implementation. It gives high priority to research and development of new techniques to save and optimize available resources and deliver tasks economically, timely and efficiently. Importantly KEI ensures that environmental and social impacts are avoided and/or mitigated with due consideration to the conditions and contexts of developing countries. Furthermore, KEI's dedication to upholding professionalism and excellence in all its undertakings has confirmed the Firm's leadership in its field and has earned the trust of its clients, thereby establishing a sound international reputation.

KEI is very capable of providing the services required for any and all of the aforementioned fields, which include but are not limited to the following:

- ⇒ Project Conceptualization
- ⇒ Special Assistance in Project Formation (SAPROF)
- ⇒ Master Planning
- ⇒ Feasibility Studies Preparation
- ⇒ Preliminary Engineering Studies, Surveys and Investigations
 - Route Selection Studies
 - Road Alignment Studies
 - Geodetic Surveys

- Aerial Photographic Mapping
- Hydrologic Studies
- Soils/Geotechnical Investigation and Evaluation
- Geological Studies
- Traffic Surveys
- ⇒ Detailed Engineering Design
- ⇒ Technical Specifications Preparation
- ⇒ Tender and Contract Documentation
- ⇒ Assistance in Tendering and Bid Evaluation
- ⇒ Contract Administration and Supervision
- ⇒ Construction Management and Supervision
- ⇒ Project Management
- ⇒ Quality Assurance (QA) and Quality Control (QC)
- ⇒ Facilities Operation and Maintenance
- ⇒ Technology Transfer Trainings
- ⇒ Environmental Impact Assessment
- ⇒ Environmental Monitoring and Management
- ⇒ Relocation and Resettlement Planning
- ⇒ Post-project Implementation Services
- ⇒ Other Technical Studies/Services

COLLABORATION WITH OTHER FIRMS

KEI has associated with other equally competent engineering consulting organizations, international as well as local firms where the project is located, in its pursuit of technical competence and international cooperation. Its alliances has enabled the provision of consulting services in accordance with the level of competence and expertise required, the application of technologies and technical solutions most appropriate to specific local conditions, and the minimization of project cost and optimization of project benefits, particularly on technology transfer and conformance with the laws and regulations of client countries.

KEI's MOST VALUABLE RESOURCES

KEI's strength lies in its pool of highly skilled and extensively experienced professional technical personnel who are each recognized in their respective fields with their professional and educational credentials. They have contributed most to KEI's excellent performance and have enabled the Firm to compete and excel in its continuing pursuits. They are the Firm's most valuable resources; Environmental Engineers, Social Scientist, Highway Engineers, Structural/Bridge Engineers, Tunnel Engineers, Traffic Engineers, Transport Planners, Urban/Rural Planners, Systems Engineers, Hydrologists, Soil/Materials Engineers, Geologists, Construction Planning and Management Specialists, Architects, Landscape Architects, Gender Specialists, Institutional Experts, IT Experts, Economists, Financial Specialists, among others.

ISO CERTIFICATE

KEI is an ISO 9001:2015 & JIS Q 9001:2015 Certified Firm.

CERTIFICATE



Certificate of Assessment

KATAHIRA & ENGINEERS INTERNATIONAL

1-14-1 Shintomi Chuo-ku Tokyo, Japan

EQA's certification is hereby granted to the above company's
Quality Management System conforming to the standard
and scope below

ISO 9001:2015 & JIS Q 9001:2015

Scope

**Provision of General Consulting Service for
Overseas Civil Engineering and Construction**

Registration No. QA150337
First issued on 7 September 2015
Re-issued on 24 August 2018
This certificate is valid from 24 August 2018 to 6 September 2021

The Chief Executive

Further clarifications regarding the scope of this certificate and the applicability
of ISO 9001:2015 requirements may be obtained by consulting EQA
The certificate written in the local language is the original
#903, 9F, 50, Digital-ro 33-gil, Guro-gu, Seoul, Korea, 152-742
URL: www.eqaworld.com



AQ 18940



No.	Project Name and Location	Consulting Services	Name of Client (Fund Source)	Cost of Consulting Services (Million US\$)	Date of Start/ Completion (mm/year)	Participation Single/ Lead/ Associate
01	Preparing the Ben Luc-Long Thanh Expressway Project, TA 7155-VIE Vietnam	TA	ADB	1.49	05/2009 - 06/2010	Lead
02	Preparing the Philippines Road Sector Improvement Project Philippines	TA	DPWH (ADB)	0.66	09/2008 - 07/2010	Lead
03	Project on Public Works Quality Improvement through Capacity Building and Construction Management Indonesia	Capacity Building	JICA	0.5	01/2008 - 07/2010	Associate
04	Multi-Stakeholder Transport Planning and Traffic Management Improvement in Metro Iloilo-Guimaras under Capacity Enhancement Program Philippines	CB	JICA	1.20	09/2007 - 10/2010	Lead
05	Consultant's Services for Detailed Design Review and Tender Assistance for Nhat Tan Bridge to Noi Bai Airport connecting Road Construction Project Vietnam	RDD, PC	JICA	0.35	02/2010 - 11/2010	Lead
06	Assets Surveyor for Small-Scale Pro-Poor Infrastructure Vietnam	Survey	JICA	0.25	03/2010 - 11/2010	Lead
07	Special Assistance for Project Implementation (SAPI) for Eastern Province Water Supply Development and Provincial / Rural Development Project in Sri Lanka Sri Lanka	SAPI	JICA	0.70	05/2010 - 11/2010	Lead
08	Preparatory Survey on the Project on Protection Measures from Flood and Salinization (Phase 2) Azerbaijan	Survey	JICA	0.025	11/2010 - 12/2010	Single

No.	Project Name and Location	Consulting Services	Name of Client (Fund Source)	Cost of Consulting Services (Million US\$)	Date of Start/ Completion (mm/year)	Participation Single/ Lead/ Associate
09	Design and Supervision Consultant of Road Rehabilitation 2 Project (RR2P)-DSC 1 Sumatra Region Indonesia	D/D, C/S	MPW (ADB)	3.45	04/2007 - 12/2010	Lead
10	Mid-Term Review (Safety Management) of On-going ODA Loan Project 2009 Vietnam	OS (Review)	JICA	0.13	08/2010 - 12/2010	Lead
11	Detailed Design and Construction Supervision of Patapat Viaduct, Suyo - Cervantes - Mankayan - Abatan, Cervantes - Sabangan, and Ligao - Pio Duran Road Improvement Project under Arterial Road Links Development Project V Philippines	D/D, P/C C/S	DPWH (JBIC)	10.14	02/2002 - 02/2011	Lead
12	Study on the Public-Private Partnership (PPP) Program for the Hanoi Urban Expressway Network Development Vietnam	PPP	METI	0.59	08/2010 - 02/2011	Lead
13	Preparatory Study for the Improvement of Quality Management for Highway and Bridge Construction and Maintenance Phase II Philippines	Study	JICA	0.052	03/2011 - 04/2011	Single
14	Construction Supervision of North Java Corridor Flyover Project Indonesia	C/S	MPW (JBIC)	2.31	12/2006 - 04/2011	Lead
15	Research of Affected Assistance Promotion of Bishkek-Osh Road Improvement Project Kyrgyz Republic	Research	IAC (JICA)	0.37	02/2011 - 06/2011	Single
16	Feasibility Study on the Project for Rehabilitation of Kurgan Tyube-Dusti Road, Phase III The Republic of Tajikistan	F/S	JICA	0.20	01/2011 - 07/2011	Single

No.	Project Name and Location	Consulting Services	Name of Client (Fund Source)	Cost of Consulting Services (Million US\$)	Date of Start/ Completion (mm/year)	Participation Single/Lead/Associate
17	The Project for the Capacity Building of Road Maintenance Kyrgyz	Capacity Building	JICA	1.8	03/2008 - 07/2011	Single
18	Dhaka Urban Transport Network Development Study, Phase 2, Feasibility Study of MRT Line 6 Bangladesh	FS	DTCB/MOC (JICA)	1.60	05/2010 – 07/2011	Lead
19	Project for Community Development for the Returnees and Receiving Communities in Nangarhar Province Afghanistan	Community Development	JICA	5.42	06/2010 – 08/2011	Single
20	Detailed Engineering Design and Construction Supervision of Urgent Bridges Construction Project for Rural Development Philippines	D/D P/C C/S	DPWH (JBIC)	22.51	06/2003 – 08/2011	Lead
21	Preparatory Study for LRT Line 2 Extension Project Philippines	Study	JICA	0.17	02/2011 – 10/2011	Associate
22	Preparatory Survey on Mombasa Road Development Project Kenya	Preparatory Survey	JICA	0.55	05/2011 - 12/2011	Lead
23	Detailed Engineering Design and Bid Documents Preparation for Bridges Timor-Leste	D/D	MOI	0.59	06/2011 - 12/2011	Lead
24	The Programme for the Improvement of Capabilities to Cope with Natural Disasters caused by Climate Change Indonesia	F/S	MPW/JICS	0.20	09/2011 - 01/2012	Single
25	Study of the Project for Ninh Binh – Bai Vot Expressway Vietnam	F/S	Govt. of Vietnam/MCT (JICA)	0.68	08/2011 - 02/2012	Lead

No.	Project Name and Location	Consulting Services	Name of Client (Fund Source)	Cost of Consulting Services (Million US\$)	Date of Start/ Completion (mm/year)	Participation Single/ Lead/ Associate
26	Detailed Engineering Design, Pre-Construction and Construction Supervision of Central Mindanao Road Project (Awang – Upi – Lebak - Kalamansig Road) Philippines	D/D, P/C C/S	DPWH (JBIC)	4.709	09/2005 – 02/2012	Lead
27	Study on North-South Expressway Project (Ninh-Binh Bai Vot Section) Vietnam	Study	METI	0.42	07/2011 - 02/2012	Lead
28	Preparation Study for National Road No. 1 Rehabilitation (Phnom Penh-Neakkurun) Cambodia	FS	JICA	0.17	09/2011 – 02/2012	Single
29	Construction Supervision of the Project for the Improvement of Bridges in Nias Island Indonesia	C/S	JICA	0.30	03/2009 - 03/2012	Single
30	Preparatory Survey on Phap Van-Cau Gie Expressway Project Vietnam	Study	VEC (JICA)	1.83	03/2011 - 03/2012	Lead
31	Construction Supervision of the Project for Construction of Bridge in the Province of Nusa Tenggara Barat, Phase 2 Indonesia	C/S	JICA	4.10	04/2010 – 03/2012	Single
32	The Project for Enhancement of Operation and Management Capacity of Inland Waterway in South Sudan, Phase I South Sudan	Capacity Development	JICA	1.07	03/2011 - 03/2012	Associate
33	New Mechanism Feasibility Study for Urban Transport Management Laos PDR	FS	Global Environment Center Foundation	0.59	07/2011 – 03/2012	Lead
34	Project for Developing Motor Vehicle Regulations and Certification Philippines	Study	DOTC (JICA)	0.58	01/2011 - 03/2012	Associate

No.	Project Name and Location	Consulting Services	Name of Client (Fund Source)	Cost of Consulting Services (Million US\$)	Date of Start/ Completion (mm/year)	Participation Single/Lead/Associate
35	Preparatory Survey on the Project for Construction of Bridges in the Province of Nusa Tenggara Barat, Phase 3 Indonesia	C/S	JICA	0.074	11/2011 - 03/2012	Single
36	Consulting Services for Ben Luc-Long Thanh Expressway Technical Assistance Project Vietnam	D/D	VEC (ADB)	12.30	12/2010 - 05/2012	Lead
37	The Project for Improvement of Transportation Capacity of Public Bus in Vientiane Capital*1 Lao People's Democratic Republic	D/D	MPWT/DOI (JICA)	0.21	04/2011 - 07/2012	Single
38	Levantamiento Censal De Lote 6: Copan Y Cortes En Lpi-Sdp-Uap-B10mil-201-2011 "Levantamiento Censal De Nuevos Hogares en Pobreza Extrema Y Pobreza Ubicados En 12 Departamentos Del Pais Guatemala	Survey	JICA	0.50	06/2012 - 07/2012	Lead
39	Monitoring of Post Ondoy and Pepeng Infrastructure Restoration Project Philippines	D/D, C/S	JICA	0.93	04/2010 - 09/2012	Single
40	The Project for Strengthening of Construction Quality Control Cambodia		JICA	1.33	05/2011 - 10/2012	Single
41	The Project for Strengthening of Construction Quality Control Cambodia	C/S	JICA	2.00	11/2009 - 10/2012	Single
42	Dhaka Urban Transport Tall System ITC Project. (SPASS Project) Bangladesh	Study	JICA	0.23	09/2011 - 10/2012	Lead
43	Preparatory Works of Metro Manila Skyway Stage 3 Project Philippines	Study	CLP	0.31	07/2012 - 10/2012	Lead

No.	Project Name and Location	Consulting Services	Name of Client (Fund Source)	Cost of Consulting Services (Million US\$)	Date of Start/ Completion (mm/year)	Participation Single/ Lead/ Associate
44	Construction of Road Maintenance Management System and Human Resource Development Project Management Guidance Study Afghanistan	CS	JICA	0.017	09/2012 – 10/2012	Single
45	Detailed Engineering Design and Construction Supervision of Rural Roads Network Development Project, Phase III Philippines	D/D, P/C C/S	DPWH (JBIC)	9.95	01/2003 - 11/2012	Lead
46	Review of Detailed Engineering Design, Pre-construction and Construction Supervision of the Arterial Road Bypass Project (Phase I) (Plaridel and Cabanatuan) Philippines	RDD, P/C, C/S	JBIC	4.70	06/2005 – 11/2012	Lead
47	Construction of Nairobi Western Ring Roads Republic of Kenya	P/C, C/S	KURA (JICA)	0.70	12/2010 – 11/2012	Single
48	Preparatory Survey for Metro Manila Construction Project, Phase VI Philippines	Preparatory Survey	JICA	1.65	11/2011 - 11/2012	Lead
49	Preparatory Study of Land Improvement / Irrigation equipment Maintenance Plan, Phase 2 Azerbaijan	F/S	JICA	0.40	11/2011 – 11/2012	Single
50	The Project for Concrete Surface Compaction Technical Support Expert Dispatch by Loan Cooperation Kyrgyz Republic	C/S	JICA	0.92	12/2011 – 11/2012	Single
51	Study for Enhancement of Railway Network System in Metro Manila Philippines	Study	DOTC (JICA)	1.40	02/2012 – 11/2012	Associate

No.	Project Name and Location	Consulting Services	Name of Client (Fund Source)	Cost of Consulting Services (Million US\$)	Date of Start/ Completion (mm/year)	Participation Single/Lead/Associate
52	Autonomous Region in Muslim Mindanao (ARMM) Social Fund Project (ASF) Philippines	B/D, D/D	ARMM (JBIC)	2.52	11/2005 – 12/2012	Lead
53	The Project for Road Maintenance Management Capacity Improvement Expert Dispatch Mozambique	Capacity Improvement	JICA	1.05	10/2011 – 12/2012	Single
54	Monrovia Metropolitan Area Somalia Drive Rehabilitation Plan Study Republic of Liberia	Study	JICA	1.50	01/2012 – 12/2012	Lead
55	Hanoi City PVC Express – National Project Vietnam	F/S	NEXCO	0.04	11/2012 – 12/2012	Single
56	Infrastructure Reconstruction Financing Facility Additional Financing (IRFF-AF) Reconstruction of Calang-Meulaboh National Road Indonesia	C/S	Binna Marga (WB)	0.39	02/2012 – 01/2013	Lead
57	Road Maintenance Capability Improvement Project Detailed Plan Development Study Tajikistan	F/S	JICA	0.03	11/2012 – 01/2013	Single
58	Road Maintenance Capability Improvement Project Detailed Plan Development Study Tajikistan	F/S	JICA	0.02	11/2013 – 01/2013	Single
59	Preliminary Design of Lake Shore Expressway Philippines	F/S	MEC	0.08	11/2012 – 01/2013	Single
60	Technical Due Diligence & Bid Support Service in the Bid Proposal for NAIA Expressway Project Philippines	F/S	SMC	0.10	11/2012 – 02/2013	Single

No.	Project Name and Location	Consulting Services	Name of Client (Fund Source)	Cost of Consulting Services (Million US\$)	Date of Start/ Completion (mm/year)	Participation Single/ Lead/ Associate
61	Preliminary Study for the Road Equipment Material Maintenance Management in the Khatlon Region and Republic Territory Tajikistan	Study	JICA	0.33	07/2012 – 02/2013	Single
62	Strengthening Quality Management Capability for Infrastructure Projects Vietnam	CB	JICA	2.112	05/2010 - 03/2013	Lead
63	Basic Information Study of the Nationwide Road Network Maintenance Planning in Cambodia Cambodia	F/S	JICA	0.02	12/2012 – 03/2013	Sole
64	Construction Security Confirmation Study Malaysia	Study	JICA	0.02	12/2012 – 05/2013	Associate
65	Yen Loan Project in 2012 (Special Yen Loan) Construction Security Confirmation Study Vietnam & Sri Lanka	Study	JICA	0.02	12/2012 – 05/2013	Associate
66	Construction Supervision of Tanjung Priok Access Road Construction Project, Phase 2 Indonesia	C/S	MPW (JBIC)	11.00	12/2010 - 06/2013	Lead
67	Study for Traffic Improvement of Bishkek City Kyrgyz Republic	Study	JICA	1.99	07/2011 – 06/2013	Lead
68	The Project for Rehabilitation of Kurgan Tybe-Dusti Road, Phase 2 Tajikistan	D/D, P/C, C/S	MOT (JICA)	0.74	12/2011 – 08/2013	Single
69	Preliminary Data Collection Survey for Expressway Master Plan Development Cambodia	MP	JICA	0.05	05/2013 – 09/2013	Single

No.	Project Name and Location	Consulting Services	Name of Client (Fund Source)	Cost of Consulting Services (Million US\$)	Date of Start/ Completion (mm/year)	Participation Single/Lead/Associate
70	Detailed Engineering Design of Metro Manila Skyway Stage 3 Project Philippines	D/D	CLP	4.29	09/2012 – 10/2013	Lead
71	Pre-Feasibility Study on the Road and Bridge Improvement for Coral Transportation Indonesia	FS	Sojitz Corporation	0.09	07/2013 – 10/2013	Single
72	Detailed Engineering and Procurement of Civil Works of the Upgrading / Improvement (UI) Component, JICA Assisted Road Upgrading and Preservation Project (RUPP) Philippines	D/D, P/C	DPWH (JICA)	2.89	03/2012 – 10/2013	Lead
73	Detailed Engineering Design of Distressed Slope Sections along CP-R1-2.6, Improvement of Malalag-Malita-Jose Abad Santos Road, Malita-Don Marcelino Section, Davao del Sur under National Road Improvement and Management Program, Phase 2 Philippines	D/D	DPWH (IBRD)	0.56	04/2013 – 11/2013	Lead
74	Review of Construction Cost Estimate for the Rehabilitation of the Existing Suai Airport Timor Leste	Review	MTC (GoTL)	0.21	10/2013 – 11/2013	Lead
75	Technical Due Diligence & Support Services for the San Miguel Infra Group in the Bid Proposal for Cavite-Laguna (CALAx) Expressway Project Philippines	F/S	SMC	0.24	10/2013 – 12/2013	Single
76	Preparatory Survey for Circumferential Road 3 (C3) Project Philippines	FS	JICA	2.36	07/2012 – 12/2013	Lead
77	Preparation Study and Bridge Rehabilitation for National Road No. between Dhaka - Chittagong Bangladesh	Study	JICA	1.73	12/2011 – 01/2014	Associate

No.	Project Name and Location	Consulting Services	Name of Client (Fund Source)	Cost of Consulting Services (Million US\$)	Date of Start/ Completion (mm/year)	Participation Single/ Lead/ Associate
78	Capacity Enhancement in Road Maintenance Vietnam	TA	JICA	2.50	08/2011 - 02/2014	Lead
79	Social / Economy Infrastructure Development and Emergency Assistance Planning Project in Upper Nile Malakal Town South Sudan	MP	JICA	8.72	02/2012 – 02/2014	Lead
80	Detailed Design and Construction Supervision of Roads in Ugongu Kenya	D/D, C/S	Kenya Urban Road Authority (KURA) (JICA)	1.06	07/2012 – 05/2014	Single
81	(Science and Technology Cooperation) Biodiversity Conservation Project in Tropical Forests through the Symbiosis of Human and Wildlife (Laboratories Construction Support)	CS	JICA	0.06	02/2014 – 05/2014	Single
82	Preliminary Data Collection Survey for Phnom Penh-Ho Chi Minh City Expressway Plan Cambodia	Preliminary Design	JICA	0.43	01/2014 – 06/2014	Lead
83	National Road No. 5 Improvement Project (Middle Section: Thleamaorm - Battambang) Preparatory Study Cambodia	Study	JICA	1.39	04/2013 – 07/2014	Lead
84	Design, Build and Execution and Completion of Shatin to Central Link Phase 2 - North South Line (NSL), Cross Harbour Tunnel Hongkong	Pre-Tender	MTRC (JICA)	0.12	09/2013 – 07/2014	Single
85	Road Damage Prevention Equipment Maintenance Plan Preparatory Study Ethiopia	Study	JICA	0.27	11/2013 – 07/2014	Single

No.	Project Name and Location	Consulting Services	Name of Client (Fund Source)	Cost of Consulting Services (Million US\$)	Date of Start/ Completion (mm/year)	Participation Single/ Lead/ Associate
86	Survey and Preliminary Engineering of Inclusive Road Operation and Development Investment Programme Sri Lanka	F/S	RDA (ADB)	0.81	11/2013 – 09/2014	Lead
87	The Project for Improvement of Quality Management for Road and Bridge Construction and Maintenance Phase II Philippines	TA	JICA	1.15	10/2011 - 09/2014	Associate
88	Capacity Enhancement in Road Maintenance Project Phase 2 Detailed Planning Study (Road Maintenance Management System/ Institutional) Vietnam	Capacity Enhancement	JICA	0.02	08/2014 – 09/2014	Associate
89	Construction Supervision of the Improvement of Selected Roads in Mindanao Region under National Roads Improvement and Management Program, Phase II (NRIMP 2) Philippines	C/S	DPWH (IBRD)	4.08	08/2011 – 10/2014	Lead
90	Feasibility Study and Preliminary Design of Southern Highway Extension Towards Colombo Sri Lanka	F/S, D/D	RDA (ADB)	1.60	08/2013 – 10/2014	Lead
91	The Conceptual Engineering Design for Batangas-Bauan Access Road Project Philippines	Conceptual Design	SMC	0.16	07/2014 – 10/2014	Single
92	Supervision Consultancy for Ampara District - Eastern Province, Provincial Road Project Sri Lanka	C/S	MLGPC (IDA)	2.42	05/2011 – 11/2014	Lead

No.	Project Name and Location	Consulting Services	Name of Client (Fund Source)	Cost of Consulting Services (Million US\$)	Date of Start/ Completion (mm/year)	Participation Single/ Lead/ Associate
93	Construction Supervision for Hanoi City Ring Road No. 3 Construction Project, Phase 2 of Mai Dich-North Linh Dam Lake Section Vietnam	C/S	MOT (JICA)	6.00	06/2010 – 11/2014	Lead
94	The Project for Improvement of Living Environment in the Southern Area of Lusaka Zambia	D/D, P/C, C/S	LGU (JICA)	2.06	08/2011 – 11/2014	Single
95	The Project of Vientiane Bus Public Corporation Management Capabilities Improvement Laos		JICA	4.31	01/2012 – 12/2014	Single
96	Ugongu Road Widening Plan Phase 2 Preparatory Study Kenya	Study	JICA	0.52	02/2014 – 12/2014	Single
97	Detailed Design and Construction Supervision of Flood Disaster Rehabilitation and Mitigation Project Cambodia	D/D, C/S	MPWT	1.77	09/2012 – 01/2015	Single
98	Preparation of Conceptual Engineering Design for Project Amphitrite (TPLEX East - West Lateral Project) Philippines	Conceptual Design	SMC	0.012	09/2014 – 01/2015	Single
99	Construction Quality and Construction Safety Improvement Measure Project Vietnam		MLT (JICA)	0.04	07/2014 – 02/2015	JV Partner
100	The Project for Improvement of Blantyre City Roads, Phase 3 Malawi	T/D, C/S	Blantyre City (JICA)	0.54	01/2014 – 03/2015	Single

No.	Project Name and Location	Consulting Services	Name of Client (Fund Source)	Cost of Consulting Services (Million US\$)	Date of Start/ Completion (mm/year)	Participation Single/ Lead/ Associate
101	Inland Water Transport Operation and Management Capacity Building Project, Phase 3 South Sudan	Capacity Building	JICA	0.017	06/2014 – 03/2015	JV Partner
102	Intersection Improvement Project (ODA) Indonesia	D/D, C/S	URDI	0.07	12/2014 – 04/2015	Single
103	The Construction Cost Auditor Services for the Proposed PASAR Cathode Berthing Facility Rehabilitation Project Philippines	FS	PASAR	0.19	11/2014 – 04/2015	single
104	Preparatory Study of Okinawa Road Improvement Plan Bolivia	Study	JICA	0.53	08/2014 – 05/2015	Single
105	Detailed Engineering Design of MRT-7 Highway Project Philippines	DD	SMC	1.27	11/2014 – 05/2015	JV Partner
106	Detailed Engineering Design of the Southeast Metro Manila Expressway (SMME) or Metro Manila Expressway Project Phase I (C6) Philippines	D/D	CITI	5.29	11/2014 – 06/2015	Lead Partner
107	Individual Consultant for Feasibility Study and Preliminary Design of Southern Highway Extension Towards Colombo Sri Lanka	F/S	RDA (ADB)	0.20	12/2014 – 06/2015	Single
108	Study for the Road Traffic Safety and Axle Road Management in Nepal Nepal	Study	DOTM (IDA)	0.29	12/2014 – 07/2015	Lead Partner

No.	Project Name and Location	Consulting Services	Name of Client (Fund Source)	Cost of Consulting Services (Million US\$)	Date of Start/ Completion (mm/year)	Participation Single/ Lead/ Associate
109	Information Collection and Confirmation Study of Subway Project in Metro Manila Philippines	Study	JICA	0.09	02/2015 – 08/2015	JV Partner
110	Review of Detailed Design and Construction Supervision of Transport Sector Loan for National Road Network Improvement Vietnam	RDD, PC, CS	MOT (JBIC)	19.70	01/2005 – 09/2015	Lead
111	Preliminary Design for Metro Manila Skyway Stage 3 Upgrade Project Philippines	Preliminary Design	SMC	0.83	06/2015 – 09/2015	Single
112	Rural Roads Construction Project II, Sindh Pakistan	DD, CS	WSD (JICA)	4.66	01/2010 – 10/2015	Lead
113	Study of the Related Analytical Technology and Accidents Control of the Road Traffic Operation in Indonesia Indonesia	Study	NTT Data	0.04	05/2015 / 10/2015	Single
114	Project on the Reinforcement of Communities for Promoting Social cohesion in Greater Abidjan (Evaluation Analysis) Cote D'Ivoire	Evaluation Analysis	JICA	0.03	08/2015 – 10/2015	Single
115	Project for Capacity Enhancement in road Maintenance (Technical Cooperation Project) Tajikistan	Study	JICA	0.22	02/2015 – 11/2015	Single

No.	Project Name and Location	Consulting Services	Name of Client (Fund Source)	Cost of Consulting Services (Million US\$)	Date of Start/ Completion (mm/year)	Participation Single/ Lead/ Associate
116	Implementation Supervision of Road and Equipment Maintenance Plan [Osh, Jala-Abad, Talas] Kyrgyz	C/S	MOTC (JICA)	0.35	08/2014 – 12/2015	Single
117	Proyecto de Mejoramiento y Pavimentacion de La Ruta Nacional 7 Este, La Ruta Departamental (RD) Av-05 El Rosario-Senahuy La Rehabilitacion de Cominos Rurales Asociados a La ruta Nacional 7E Guatemala	D/D, P/C, C/S	DGC-MCIV (JBIC)	19.10	03/2007 – 01/2016	Lead
118	Package No. S-02 Institutional Development Consultancy Services for Dhaka Mass Transit Development Project Bangladesh	Institutional Development	DMTCL (JICA)	0.20	08/2014 – 01/2016	JV Member
119	Vientiane Bus Corporation Capacity Improvement Project, Phase 2 Detailed Planning Study Laos	Study	JICA	0.02	12/2015 – 01/2016	Single
120	Study on the Project for the Construction of the Davao Samal Bridge Philippines	Study	METI	0.31	08/2015 – 02/2016	Lead Partner
121	National Road No. 1 Rehabilitation Project, Phase 4 Cambodia	D/D, P/C, C/S	MPWT (JICA)	0.89	02/2014 – 03/2016	Single
122	Detailed Design Study on Metro Manila Interchange, VI (MMIC) Philippines	D/D	JICA	2.20	04/2015 – 03/2016	Lead Partner

No.	Project Name and Location	Consulting Services	Name of Client (Fund Source)	Cost of Consulting Services (Million US\$)	Date of Start/ Completion (mm/year)	Participation Single/ Lead/ Associate
123	Third Preparatory Study for the Rural Road Construction Equipment Development Plan Bhutan	Study	JICA		07/2015 – 03/2016	Lead Partner
124	Congestion Study and Solutions Consideration Project in Special Capital Territory of Jakarta Indonesia	Study	MLI	0.10	01/2016 – 03/2016	Lead Partner
125	Resettlement Implementation Support Services Philippines	Resettlement	MCAP (MCC)	1.50	07/2012 – 07/2016	Lead
126	Preparatory Study for Agricultural and Mechanical Services Development Plan Bhutan	Study	JICA	0.14	12/2015 – 07/2016	Single
127	Project Management and Construction Supervision Consultant for Samar Road Rehabilitation Project Philippines	C/S	MCA-P (MCC)	4.13	01/2012 – 08/2016	Lead
128	Preparation of Design and Construction Supervision of Road Rehabilitation Works of the Dili-Ainaro Road (Phase II and III) Timor Leste	D/D, C/S	MOI (IDA)	2.70	06/2012 – 09/2016	Lead
129	Preparation of Designs and Construction Supervision of Timor Leste Road Network Upgrading Project Timor Leste	D/D, C/S	MOI (ADB)	6.35	01/2013 – 09/2016	Lead
130	Data Collection Survey on Transportation Sector Lao	Survey	JICA	0.11	03/2016 – 09/2016	Single

No.	Project Name and Location	Consulting Services	Name of Client (Fund Source)	Cost of Consulting Services (Million US\$)	Date of Start/ Completion (mm/year)	Participation Single/ Lead/ Associate
131	Feasibility Study, Environmental Impact Assessment, Social Impact Assessment & Preparation of Resettlement Action Plan, Preliminary and Detailed Design and Preparation of Tender Documentation for the Construction of the Mombasa Northern Bypass Kenya	F/S, D/D	KeNHA (IDA)	1.50	04/2015 – 10/2016	Lead
132	Project Formulation Survey on Introducing Learning Management System (LMS) for Skill Development of Government Staff Kyrgyz	Survey	JICA	0.28	04/2016 – 11/2016	JV Partner
133	West Nusa Tenggara Bridge Construction Project Indonesia	D/D, P/C, C/S	MPW (JICA)	0.65	11/2014 – 12/2016	Single
134	Detailed Design of Hanoi-Lang Son Expressway Vietnam	D/D	VEC (ADB)	4.23	05/2015 – 12/2016	Lead
135	Contract Pertaining to the JFY 2016 Country-Focused Knowledge Co-Creation Program (Tajikistan & Kyrgyz) ”Project for Improvement of Maintenance Capability of Road Management Equipment” Tajikistan / Kyrgyz	Technical Training	JICA	0.03	10/2016 – 12/2016	Single
136	Ouagadougou Southeast Bypass Road Improvement Plan Burkina Faso	Study	JICA	0.12	12/2015 – 01/2017	Lead Partner
137	The Project for Reconstruction of Somalia Drive in Monrovia (Preparatory Study Phase 2) Liberia	Preparatory Study	JICA	0.68	01/2016 – 01-2017	Lead Partner

No.	Project Name and Location	Consulting Services	Name of Client (Fund Source)	Cost of Consulting Services (Million US\$)	Date of Start/ Completion (mm/year)	Participation Single/ Lead/ Associate
138	Jakarta MRT Project – Construction Supervision Indonesia	C/S	JICA	0.75	04/2014 – 03/2017	JV Partner
139	Preparatory Survey on Mombasa Gate Bridge Construction Kenya	Study	JICA	1.49	02/2016 – 03/2017	Lead Partner
140	JPY 2016 Safety Review of On-going Japanese ODA (STEP) Loan Projects Philippines, Papua New Guinea	Study	JICA	0.14	10/2016 – 03/2017	JV Partner
142	Lach Huyen Infrastructure Construction Project (Bridge and Road Portion) Vietnam	C/S	MOT/PMU (JICA)	0.31	03/2014 – 05/2017	JV Partner
143	Ngong Road Development Project, Phase II Preparatory Survey Kenya	Survey	JICA	0.34	09/2016 – 05/2017	Single
144	The Project for Improvement of Machinery and Equipment for Construction and Maintenance of Rural Agricultural Road in the Kingdom of Bhutan, Phase III (Project Implementation) Bhutan	Project Implementation	JICA	0.21	05/2016 – 06/2017	Single
145	The Preparatory Survey for the Project for the Improvement of Fire Equipment Armenia	Survey	JICA	0.54	09/2016 – 06/2017	JV Member
146	North south Commuter Railway Project (Malolos-Tutuban) Detailed Design Study Philippines	Design Study	JICA	33.54	02/2016 – 08/2017	JV Member

No.	Project Name and Location	Consulting Services	Name of Client (Fund Source)	Cost of Consulting Services (Million US\$)	Date of Start/ Completion (mm/year)	Participation Single/ Lead/ Associate
147	The Mega Manila Subway Project – Preparatory Survey Philippines	Preparatory Survey	JICA	0.16	03/2016 – 08/2017	JV Partner
148	Design and Cost Estimation of PC Girder Bridge/Steel I-Beam Bridge Philippines	D/D	Nippon Steel & Sumitomo Metal Corporation	0.01	04/2017 – 08/2017	Single
149	Project for Honiara Traffic Development Master Plan – Formulation of Detailed Plan (Traffic Plan) Solomon Islands	M/P	JICA	0.03	09/2017 – 11/2017	Single
150	Dhaka Urban Transportation Development Project (Line 1 and Line 5) – Preparatory Survey Bangladesh	Survey	JICA	5.47	06/2016 – 02/2018	JV Partner
151	Follow-up Cooperation (Research and Construction Supervision) for the Project for Introducing Clean Energy by Solar Electricity Generation System Afghanistan	Research	JICA	0.29	11/2016 – 02/2018	Single
152	Detailed Design of SASEC Port Access Elevated Highway Project Sri Lanka	D/D	RDA (ADB)	1.81	02/2016 – 02/2018	Lead Partner
152	Contract Pertaining to the JFY 2017 Country-Focused Knowledge Co-Creation Program (Tajikistan & Kyrgyz) “Project for Improvement of Maintenance Capability of Road Management Equipment” Tajikistan/Kyrgyz	Project Improvement	JICA	0.06	11/2017 – 02/2018	Single

No.	Project Name and Location	Consulting Services	Name of Client (Fund Source)	Cost of Consulting Services (Million US\$)	Date of Start/ Completion (mm/year)	Participation Single/ Lead/ Associate
154	Construction Supervision of Road Rehabilitation Works of Selected Sections on the Dili-Ainaro Road, Lot 3, Timor-Leste Road Climate Resilience Project Timor Leste	C/S	MPW (IDA)	2.76	09/2014 – 03/2018	Single
155	Project for Capacity Enhancement in Road Maintenance Phase II (Technical Cooperation Project) Vietnam	Capacity Enhancement	JICA	5.20	02/2015 – 03/2018	JV Leader
156	Public Traffic Management Capacity Strengthening Project in Tinh Binh Durong Vietnam	Capacity	JICA	0.09	03/2015 – 03/2018	JV Partner
157	JPY 2017 Safety Review of Ongoing Japanese ODA (STEP) Loan Project Vietnam	STEP	JICA	0.04	10/2017 – 05/2018	JV Member
158	The Project for Establishment of Clearing House for Integrating Transport Ticketing System in Dhaka City and Adjacent Districts Phase I	T/A	JICA	2.43	03/2014~05/2018	Lead Partner
159	Technical Cooperation Project on Development Planning of Agriculture Sector in Nghe An (Preparation of Master Plan) Vietnam	MP	NTCI	0.02	11/2017 – 06/2018	Subcon
160	Road Maintenance Capacity Improvement Project in Addis Ababa City Ethiopia	Capacity Improvement	JICA	1.16	07/2015 – 07/2018	Lead Partner
161	The Project for Reconstruction of Urmal River Bridge on Talas-Taraz Road-Preparatory Survey Kyrgyz	Survey	JICA	0.58	06/2017 – 08-2018	JV Leader
162	The Preparatory Study for Comprehensive Urban Transport Plan of the Greater Yangon Myanmar	Study	JICA	0.44	10/2017 – 08-2018	Subcon

No.	Project Name and Location	Consulting Services	Name of Client (Fund Source)	Cost of Consulting Services (Million US\$)	Date of Start/ Completion (mm/year)	Participation Single/ Lead/ Associate
163	Construction Supervision of the Suai – Fatucaí / Mola Section of the Suai-Beaco Highway Road Project Timor Leste	C/S	MPW/MPMR (GoTL)	6.98	07/2015 – 12/2018	Lead
164	The Project for Improvement of Workshop for Road Maintenance Equipment Kyrgyz		MOTR (JICA)	0.26	05/2017 – 12/2018	Single
165	The Project for Improvement of Public Bus Operation in Phnom Penh (Project Implementation) Cambodia	T/D, C/S	Phnom Penh Capital Administration	0.27	06/2017 – 12/2018	Single
166	The Project for Capacity Development of Road Management Congo	Capacity Development	JICA	3.35	02/2016 – 01/2019	JV Partner
167	Timor-Leste Road Climate Resilience Project – Feasibility Study and Detailed Engineering Design of Branch Road Section of the Dili - Ainaro Road namely, Aituto-Hatubuilico-Letefoho-Gleno Timor-Leste	F/S, D/D	MDIR (IDA)	1.26	04/2018 - 02/2019	Single
168	Construction Supervision of Asset Preservation and Road Improvement Projects under Road Improvement and Institutional Development Project (RIIDP) Philippines	C/S	DPWH (ADB)	3.17	04/2014 – 08/2019	JV Partner
169	Detailed Engineering, Procurement of Civil Works and Construction Supervision of the Asset Preservation Contract-Preventive Maintenance (APC-PM) Component Philippines	D/D, C/S	DPWH (JICA)	4.14	01/2013 – 10/2019	Associate

No.	Project Name and Location	Consulting Services	Name of Client (Fund Source)	Cost of Consulting Services (Million US\$)	Date of Start/ Completion (mm/year)	Participation Single/ Lead/ Associate
170	Detailed Engineering Design and Tendering of Asset Preservation and road Improvement Components under Road Improvement and Institutional Development Project (RIIDP) Philippines	D/D, T/A	DPWH (ADB)	11.55	01/2015 – 02/2020	Lead Partner
171	The Project for Establishment of Clearing House for Integrating Transport Ticketing System in Dhaka City and Adjacent Districts Phase II	T/A	JICA	3.511	03/2020~04/2024	Lead Partner

*1 The Project for Improvement of Transportation Capacity of Public Bus in Vientiane Capital: In this project, Felica Lite-s card is used as ticket. Bus fare is collected from Felica Lite-s.