



## Introduction

*The world around us is changing faster than ever. Today's success for a company depends greatly on its ability to gather, process and analyze data promptly, and on its agility to use that to make the decision of the day. To stay ahead of the frantic pace of this changing, digital world, companies are looking for robust communication infrastructure, efficient and cost effective software solutions, and new technologies and devices that would give them an edge. Automate your processes; streamline your operations; spend your time not trouble-shooting but strategic thinking. Make it efficient.*

*At Netplanet we know that the key to our success is our human resource. It's the people at Netplanet, who with their professionalism, commitment, devotion and dedication are driving the company towards excellence. The team includes professionals with Software, T&A devices, Access Control Solutions, CCTV, Networking, and many more than a decade of experience in the field of ICT.*

## Company Overview...

*Since its creation in 2001, Netplanet Information Systems Ltd. has been boosting and widely distributing the significance of security system and access control system for edifices as a pioneer of business, conveying the importance of entrance/gateway control system, time & attendance system, CCTV surveillance system when such concept began to emerge in Bangladesh. By providing the security system in governmental security institutions, research centers, financial institutes and other major facilities, Netplanet Information Systems Ltd., has newly set the technological standard for the security system business and has become the prime leader in the industry.*



Also, by breathing life into security gates, automatic doors, revolving doors and other entrance/gateway control system businesses, Netplanet Information Systems Ltd. has obtained a superb position in the high-end entrance/gateway control system market.

With customers' ardent interest and encouragement, Netplanet Information Systems Ltd. launched a new slogan "Total Solutions for Access Technologies," -a design, supply, and installation "all-in-one" system- and marked a new era in access control system field. Also, Netplanet Information Systems Ltd. has combined Biometric & RFID technology, Entrance Solution, electronic system, communication skill, software and application knowledge to the total solutions for access technologies, to provide the best to our customers and to meet with the company's renowned reputation.

With customers' zeal approval for the new access controllers and door locks integrated with biometric fingerprint recognition technology, Netplanet Information Systems Ltd. once again proved excellence of the product and company in the local market.

Netplanet Information Systems Ltd. would like to express utmost gratitude to the loyal customers' that poured much interest and encouragement, and promise a perpetuation of sincere commitment.

## **Principle Companies** whom we are working with

**Hundure** : Hundure Technology Co., Ltd. (A Taiwan company) world leader in the field of RFID based access controller & Time attendance reader technology, Established in 1989.

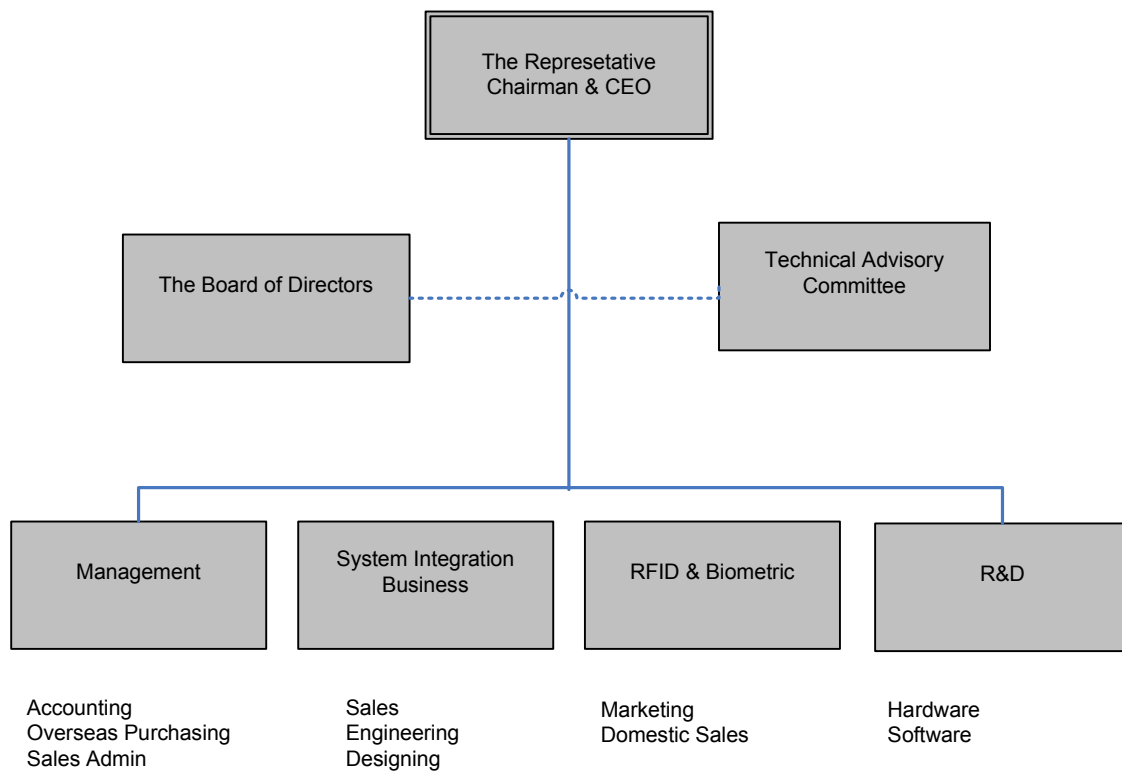
**Keico** : Keico Hightech Inc. (A Korean company) has set the technical standards for our security (finger print) business and has proven to be the prime leader in our industry, established in 1989.

**PeopleKey** : PeopleKey (A Australian company) is a leading supplier of biometric access control and employee attendance systems. Established in 1999, PeopleKey prides itself on offering innovative biometric solutions.

**Campro** : **Campro** Electronics Co., Ltd. (A Taiwanese company) is a CCTV manufacturer and development company, established in 1996.

**Kocom** : Kocom (A Korean company) is heading forward the world class company with the best technical competence in the field of Home Automation Systems, established in 1976..

## ORGANIZATION CHART





## Total Security Solutions

- *Surveillance System Integrated with Total Security Control System*
- *Security System for Government, Military Defense and Intelligent Building*
- *Security Solution Networking System for a Wide Area*
- *CCTV, Tracking System, Road Blocker, Tier Killer and Locking Device*
- *Key Management system for Hotel Room*
- *Patrol Management system and Perimeter Intrusion Detection system*

## Biometrics & RFID

- *Fingerprint and RFID Access control system*
- *Fingerprint and RFID Time & Attendance Solution*
- *Fingerprint and RFID Car Parking Control*
- *Home Networking system and Door Lock with Biometric & RFID Technology*

## Entrance Business

### **Security Gate**

- *Building Lobby, Research Facility Entrance, Factory Entrance and etc*
- *Prompt entry check up without a sense of incongruity and intimidation*

### **Revolving Door:**

- *Hotel, Airport, Building and etc*
- *Models vary from small size turnstiles to grand revolving doors Automatic Door:*
- *Airport, Terminal, Hospital, General Building and etc*



## Automaton

*Automation plays an increasingly important role in the global economy and in daily experience. We provide automation services in several business sectors where security, quality and reliability are the main issues.*

Today, however, office automation is increasingly understood as term that refers not just to the mechanization of tasks but to the conversion of information to electronic form as well. The advent of the personal computer revolutionized office automation.

## Software Solutions...

Netplanet has responded to an increasingly competitive market by not only investing in our employees but also our software. One of the most powerful and advanced integrated **Human Resources and Payroll applications as well as Accounts**, our software delivers accurate real-time information to all levels of an organization. Our software has become the choice for the development of strategic **HR, Payroll & Accounts**.

The reliability of our software, combined with the efficient service and support given by our people, results in a sophisticated application whilst maintaining the lowest cost of ownership. A valuable tool in transforming your business it still remains simple to use with easily accessible reports available on demand to decision makers.

## Taking ownership...

At Netplanet we own, develop and maintain all our software, giving you peace of mind that we can tailor it to suit your specific requirements. We can quickly react to changing market and legislative requirements to ensure our solutions always satisfy emerging trends and sector demands. Confidence is offered knowing that our software meets the highest industry standards and that we have full control over its development, and an in-depth understanding of its deployment.



## **Your Accounts, HR and Payroll Solutions...**

We recognize that no two projects are ever the same, or the goals of any two clients. This is why we make sure from the outset we fully understand your **Accounts, HR and Payroll objectives**.

Our solutions are scalable and ideal for any type of project of any size or complexity, from a simple **Accounts, HR and Payroll** software implementation to large transformation projects.

Cost control, time management and quality assurance are the backbone of our project management approach. Netplanet has the expertise to take care of everything: from scoping and smooth implementation, to training and evaluation, to meet strict timescales.

Careful management by our experienced project teams ensure that highlighting and addressing problems before they happen saves unnecessary expense. We have all the experience needed to manage the implementation process and bring your system on-line, on-time and to budget.

Netplanet deliver a wide range of services, from in-house software, full application outsourcing to a fully Managed Accounts and Payroll service with HR applications. Our customers show that this can not only have a positive impact on their bottom line, but has enabled organizations to become more strategic and flexible in their approach to a dynamic, global business environment.



## Company Profile

<b>Company Name</b>	<b>:- Netplanet Information Systems Ltd.</b>
Nature of Business	:- Exporter/Importer & Supplier.
Year of Establishment	:- 2001
Annual Turnover	:- 36 million BDT.
Bankers :	:- IFIC Bank, Motijheel, Dhaka, Bangladesh Janata Bank Ltd., Malibagh, Dhaka, Bangladesh

### Management :

- 1) Engr. Motiur Rahman – Chairman & CEO: Possessing a wide range of experience in different types of businesses including ICT trade. Carried out extensive visits abroad in connection with the ICT trade. E-mail: [Rahman@nis-bd.com](mailto:Rahman@nis-bd.com)
- 2) Mr. Abul Hossain – Managing Director. Attained a vast knowledge and experience in the manufacturing and trading of garments. Visited quite frequently around the world in connection with the business in the field of apparels, E-mail: [apu@almuslimgroup.net](mailto:apu@almuslimgroup.net)
- 3) Mr. Ashraf-UI Islam – Director (Marketing). Has vast experience in marketing, orders follow up & executions inquiry up to delivery. E-mail- [info@nis-bd.com](mailto:info@nis-bd.com)
- 4) Mr. Masum Ibnul H. Khan – General Manager. Well experienced in ICT sector especially on Marketing. [masumkhan@nis-bd.com](mailto:masumkhan@nis-bd.com)
- 5) Mr. Kazi Zahidul Islam – Support Manager. Well experienced in System support, Design, Implement & Trouble Shooting. [zahid@nis-bd.com](mailto:zahid@nis-bd.com)

### Employees :

Management	05
Marketing	05
Sales	02
R&D	02
Software development	03
System Support	08
Commercial Officer	01
Accountant	02
Admin Manager	01
Office boy	02
<b>Total</b>	<b>31 Persons</b>

## Partial Client List:

1. **Standard Group**
2. **Apex Group**
3. **Apex Adelchi Footwear Limited**
4. **Modina Footwear Limited**
5. **Pacific Blue (Jeans Wear) Limited**
6. **Almuslim Group**
7. **NEC Corporation (Japan)**
8. **Shin Shin Apparels**
9. **Ananta Group**
10. **ACS TEXTILES (Bangladesh) Ltd.**
11. **Islam Group**
12. **Givency Group of Industries**
13. **Mohammadi Group**
14. **Echo Tex**
15. **Mimtex Group**
16. **Eurotex Knitwear Ltd.**
17. **Envoy Group**
18. **Westin Hotel & Resorts**
19. **Nitol Motors Ltd.**
20. **Data Path**
21. **Soudi Arab Embassy**
22. **Bangladesh Commerce Bank**
23. **Mobiserve**
24. **Liz fashion**
25. **Muslim Aid**
26. **Aba Group**
27. **Hamem Group**
28. **New Age**
29. **Blue Ocean Footwear Ltd.**
30. **Fareast**
31. **Sarmin group**
32. **Bangladesh TAX Academy**
33. **Asrotex Group**
34. **Daffodil international University**
35. **Eastern Housing**